


delta 

2019 Bike Catalog





For over 35 years,  
Delta has been  
creating thoughtfully  
designed, well built  
home storage and  
cycling products.

You'll notice we've taken the bold step of changing our branding with a new logo and color scheme. This new identity is a better expression of our smart, design-driven approach to product development. Clearly modern yet more accessible to a broader audience, our new branding will help increase sales, benefiting all our distributor and IBD partners.





## Smartphone Holder

SKU **HL6002** / MSRP **\$24.99**

- 1 Secure** Weatherproof bungee and patented cam lock
- 2 Compatibility** Works with all standard non plus size phones and cases, up to 6" x 2.9" x .625". Sliding system allows for instant in/out on the go
- 3 Construction** Precision molded thermoplastic
- 4 Quick Assembly** Handlebar and stem mounts included

Weight  
0.14 lbs / 65 grams



## XL Holder

SKU **HL6500** / MSRP **\$24.99**

- 1 Secure** Weatherproof bungee and patented cam lock
- 2 Compatibility** Works with all plus size phones and cases, up to 7.8" x 3.5" x .5". Sliding system allows for instant in/out on the go
- 3 Construction** Precision molded thermoplastic
- 4 Quick Assembly** Handlebar and stem mounts included

Weight  
0.17 lbs / 80 grams



## Hefty +

SKU **HL6300** / MSRP **\$34.99**

- 1 Secure** Weatherproof bungee and patented cam lock
- 2 Compatibility** Works with all phones and cases. Sliding system allows for instant in/out on the go
- 3 Construction** Precision molded thermoplastic
- 4 Quick Assembly** Handlebar mount, stem mount and ElastoMount included
- 5 Versatile** Includes additional ElastoMount to connect to any bar and for quick on/off

Weight  
0.24 lbs / 110 grams



**Free**  
smartphone holder  
demo unit

Email [dealers@designbydelta.com](mailto:dealers@designbydelta.com)

## X Mount Pro

SKU **HL6800** / MSRP **\$24.99**

- 1 Secure** Composite construction securely holds your phone
- 2 Compatibility** Silicon stretch web material secures any phone with any case
- 3 Construction** Aluminum with silicon stretch web. Aesthetic design offers riders a low-profile mount
- 4 Quick Assembly** Mount drops under stem cap

Weight  
0.11 lbs / 50 grams





## Two Bike Gravity Stand

SKU **RS6002** / MSRP **\$89.99**

- 1 Original Design** Leans against wall & holds bike using gravity
- 2 Fully Adjustable** Independent arms accommodate any bike style
- 3 Versatile** Elegant design looks good in any room or garage
- 4 Quick Assembly** Easy to assemble with regular screwdriver
- 5 Construction** Durable powdercoated steel with custom molded arm covers

Max Weight  
80 lb / 36 kg per bike

Dimensions  
84" x 20" x 16" / 2135 x 501 x 405 mm



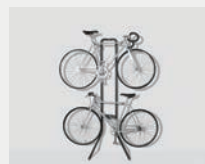
## Two Bike Rugged Gravity Stand

SKU **HDRS6002** / MSRP **\$109.99**

- 1 Original Design** Leans against wall & holds bike using gravity
- 2 Fully Adjustable** Independent arms accommodate any bike style
- 3 Versatile** Elegant design looks good in any room or garage
- 4 Quick Assembly** Easy to assemble with regular screwdriver
- 5 Construction** Industrial-grade powdercoated steel & custom molded arm covers

Max Weight  
100 lb / 45 kg

Dimensions  
86" x 23.5" x 13.75" / 2184 x 597 x 350 mm



## Two Bike Gravity Pole Stand

SKU **RS6100** / MSRP **\$59.99**

- 1 Original Design** Leans against wall & holds bike using gravity
- 2 Fully Adjustable** Independent arms accommodate any bike style
- 3 Versatile** Elegant design looks good in any room or garage
- 4 Quick Assembly** Easy to assemble with regular screwdriver
- 5 Construction** Durable powdercoated steel with custom molded arm covers

Max Weight  
60 lb / 27 kg

Dimensions  
84" x 22" x 14" / 2135 x 559 x 356 mm



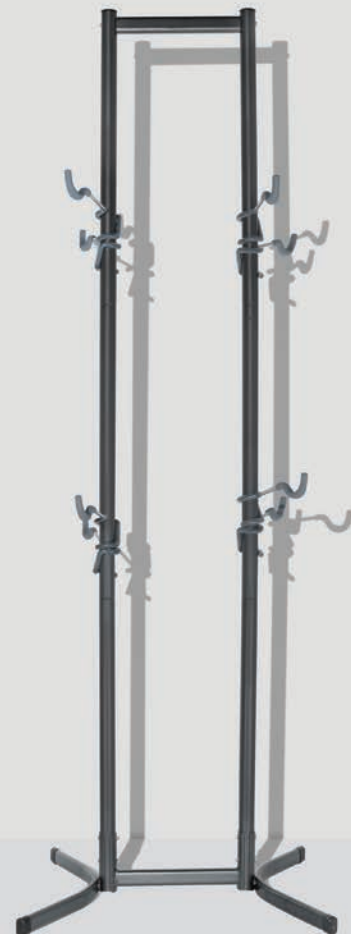
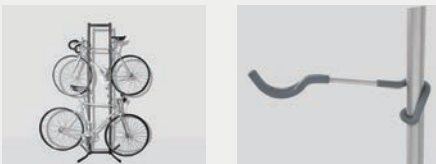
## Four Bike Free-Standing Rack

SKU **HDRS6800** / MSRP **\$149.99**

- 1 Fully Adjustable** Independent arms accommodate any bike
- 2 Quick Assembly** Easy to follow instructions only require basic tools
- 3 Construction** Durable powdercoated steel with custom molded arm covers

Max Weight  
160 lb / 70 kg up to 4 bikes

Dimensions  
86" x 24" x 24" / 2190 x 610 x 610 mm





## Single Bike Wall Mount Rack

SKU **RS4000** hook only / MSRP **\$17.99**

SKU **RS4500** tray only / MSRP **\$5.99**

SKU **RS4007C** hook & tray in silver / MSRP **\$24.99**

SKU **RS4007B** hook & tray in black / MSRP **\$24.99**

SKU **RS4008C** fat tire / MSRP **\$34.99**

- 1 Secure** Holds one bike up to 2.5/3.5" (regular/fat tire) by rim
- 2 Options** Tire tray secures rear wheel & protects wall
- 3 Versatile** Elegant design looks good in any room or garage
- 4 Colors / Customization** Black or silver
- 5 Sizes** Regular or fat tire
- 6 Construction** Durable powdercoated steel & custom molded cover

Max Weight  
40 lb / 18 kg

Dimensions  
11" x 3.5" x 5" / 280 x 84 x 131 mm



## Single Bike Wall Mount Rugged Rack

SKU **RS4400** / MSRP **\$24.99**

- 1 Secure** Holds any bike up to 2.5". Tire tray secures rear wheel & protects wall
- 2 Construction** Industrial-grade powdercoated steel & custom molded cover

Max Weight  
40 lb / 18 kg

Dimensions  
20" x 3.5" x 5" / 500 x 84 x 131 mm





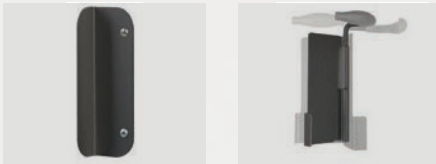
# Single Bike Hinge Wall Mount Rack

SKU **RS4100** / MSRP **\$27.99**

- 1 Secure** Holds any bike up to 2.5"
- 2 Space Saving** Easily swing bike into desired position to optimize space
- 3 Versatile** Looks good in any room
- 4 Construction** Durable powdercoated steel with custom molded covers

Max Weight  
40 lb / 18 kg

Dimensions  
10" x 3.75" x 4.25" / 25.4 x 95.25 x 108 mm



# Adjustable Spring Floor Stand

SKU **RS8700** / MSRP **\$54.99**

- 1 Secure** Two support arms for maximum stability
- 2 Fully Adjustable** Fits any bike with 2.5-5" tires
- 3 Space Saving** Spring design arms fold flat when not in use
- 4 Construction** Durable powdercoated steel with rubberized feet to protect floors

Dimensions  
19" x 16" x 19.75" / 480 x 410 x 500 mm



## Adjustable Rolling Floor Stand

SKU **RS8601** / MSRP **\$42.99**

- 1 Original Design** Rolling features allows for easy storage & transport
- 2 Secure** Wide base with triangulated arms holds bikes firmly
- 3 Fully Adjustable** Infinitely adjustable to hold any wheel size
- 4 Quick Assembly** No tools required
- 5 Construction** Industrial-grade powdercoated steel & custom arm covers

Dimensions  
22" x 15" x 17" / 560 x 380 x 430 mm



## Adjustable Floor Stand

SKU **RS8600** / MSRP **\$39.99**

SKU **RS8604-J** Connectors for 3 racks / MSRP **\$9.99**

- 1 Secure** Wide base with triangulated arms holds bikes firmly
- 2 Fully Adjustable** Infinitely adjustable to hold any wheel size
- 3 Options** Connectors can be used to join racks
- 4 Quick Assembly** No tools assembly
- 5 Construction** Industrial-grade powdercoated steel & custom arm covers

Dimensions  
22" x 15" x 17" / 560 x 380 x 430 mm



## Single Bike Ceiling Hoist with Straps

SKU **RS2300** / MSRP **\$34.99**

- 1 Secure** Smart auto-locking mechanism prevents accidental release
- 2 Options** Use with or without utility straps to hold your bicycle and larger objects such as a kayak, ladder etc.
- 3 Quick Assembly** Includes mounting hardware & full instructions
- 4 Construction** Durable powdercoated steel with nylon tensile cord rope

Max Weight  
50 lb / 22.6 kg



## Single Bike Wall Mount Pole Rack

SKU **RS6300** / MSRP **\$24.99**

- 1 Fully Adjustable** Independent arms accommodate any bike style
- 2 Quick Assembly** Installation in any wood stud with included hardware
- 3 Construction** Durable powdercoated steel with custom molded arm covers

Dimensions  
12" x 20" x 20" / 305 x 400 x 400 mm



## Two Bike Wall Mount Rack w/ Shelf

SKU **RS5103** / MSRP **\$39.99**

- 1 Secure** Molded rubber arms protect bike finish
- 2 Space Saving** Accessory shelf folds down to save space when needed
- 3 Quick Assembly** Easy installation in any wood stud with included hardware

Max Weight  
65 lb / 29.5 kg

Dimensions  
12" x 14.5" x 20" / 302 x 364 x 508 mm



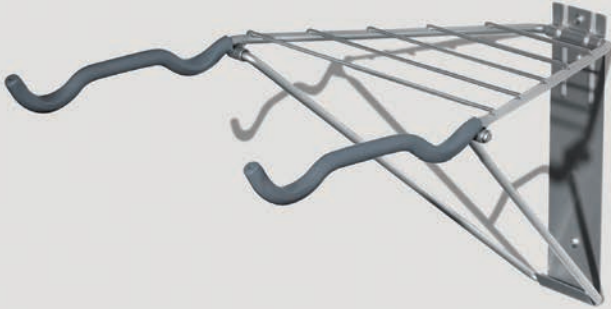
## Single Bike Wall Mount Rack w/ Shelf

SKU **RS5501** / MSRP **\$39.99**

- 1 Secure** Molded rubber arms protect bike finish
- 2 Space Saving** Custom formed steel accessory shelf folds down to save space when needed
- 3 Quick Assembly** Easy installation in any wood stud with included hardware

Max Weight  
50 lb / 22 kg

Dimensions  
17.5" x 14.5" x 10.5" / 445 x 368 x 266 mm



# MegaRack Ultra

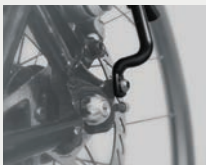
SKU **MR150A** / MSRP **\$29.99**

SKU **MR150A-DK** Disc / MSRP **\$34.99**

- 1 Secure** Triangulated design holds cargo
- 2 Fully Adjustable** Adjustable legs and extra long connector stays fit most bikes. Option for disc compatible
- 3 Construction** Lightweight aluminum

Weight  
1.53 lbs / 694 grams

Max Weight  
40 lb / 18 kg



# PostHaste Rack

SKU **MR410** Bolt clamp / MSRP **\$44.99**

SKU **MR430B** QR clamp / MSRP **\$49.99**

- 1 Flexible** Clamp fits any seat post (24-32.0mm)
- 2 Construction** Forged aluminum

Weight  
1.15 lbs / 522 grams

Max weight  
Holds up to 20 lbs / 9 kg



## Top Trunk Bag

SKU **MS2000** / MSRP **\$29.99**

- 1 **Construction** Button fastening with two-way zipper for convenience
- 2 **Flexible** Velcro attachment to any rack



## Elasto Tarp

SKU **MR145B** / MSRP **\$14.99**

- 1 **Secure** Waterproof stretch material keeps cargo covered and dry
- 2 **Flexible** Stretches up to 2X size to securely hold any load
- 3 **Construction** Weatherproof silicon and precision molded thermoplastic hooks
- 4 **Versatile** Hooks work with any rack



## Elasto Net

SKU **MR140B** / MSRP **\$9.99**

- 1 **Flexible** Stretches up to 2X size to secure any cargo / load
- 2 **Construction** Weatherproof silicon and precision molded thermoplastic hooks
- 3 **Versatile** Hooks work with any rack



## Cargo Net

SKU **MR130B** / MSRP **\$9.99**

- 1 **Secure** Holds hard to carry items
- 2 **Construction** Precision molded thermoplastic hooks
- 3 **Versatile** Hooks work with any rack on the market



## Foot Fenders

SKU TD7200 / MSRP \$12.99

- 1 **Secure** Keeps foot in position for improved pedaling efficiency
- 2 **Construction** Durable nylon
- 3 **Versatile** Works with most bike pedals

Weight  
0.2 lbs / 90 grams



## Strapless Toe Clips

SKU TD7100 / MSRP \$9.99

- 1 **Secure** Keeps foot in position for improved pedaling efficiency
- 2 **Construction** Durable nylon
- 3 **Versatile** Works with most bike pedals

Weight  
0.2 lbs / 90 grams





## Expanding Beverage Ring

SKU **HL3004** / MSRP **\$7.99**

- 1 Secure** Stretch grip holds your beverage on bumpy rides
- 2 Flexible** Design fits any size beverage
- 3 Construction** Stainless hardware and rubber shims grip any size handlebar



## Expanding Beverage Holder

SKU **HL2004** / MSRP **\$11.99**

- 1 Secure** Stretch grip holds your beverage on bumpy rides
- 2 Flexible** Design fits any size beverage
- 3 Construction** Precision molded from thermoplastic and stainless hardware
- 4 Easy Installation** Thumb screw and rubber shims fit easily on any size handlebar
- 5 Colors / Customization** Black, blue and red

Colors





## Inox Stainless Cage

SKU **BT3000** / MSRP **\$14.99**

**1 Construction** Stainless steel

Weight  
0.1 lbs / 48 grams



## Alloy Bottle Cages

SKU **BT1008 (Black)** / MSRP **\$5.99**

SKU **BT100W (White)** / MSRP **\$5.99**

SKU **BT100S (Silver)** / MSRP **\$5.99**

SKU **BT200R (Red)** / MSRP **\$5.99**

SKU **BT200BE (Blue)** / MSRP **\$5.99**

SKU **BT200T (Teal)** / MSRP **\$5.99**

- 1 Secure** Alloy construction for durability
- 2 Construction** Design works with most bottles
- 3 Colors / Customization** Painted black, white anodized: silver, red, blue, and teal

Weight  
0.14 lbs / 65.2 grams

Colors



## Alloy Stem Raiser

SKU **TD3318B** (Black) / MSRP **\$34.99**

SKU **TD3318S** (Silver) / MSRP **\$34.99**

- 1 Fully Adjustable** Increase handlebar height up to 3.25" / 8.26 cm
- 2 Construction** T6 aluminum for extra strength
- 3 Quick Assembly** With all 1 1/8" stems
- 4 Colors / Customization** Black and silver

Weight  
0.5 lbs / 230 grams



## Stem Raiser Pro

SKU **TD3418B** (Black) / MSRP **\$39.99**

SKU **TD3418S** (Silver) / MSRP **\$39.99**

- 1 Fully Adjustable** Increase handlebar height up to 4.6" / 11.7 cm
- 2 Construction** T6 aluminum for extra strength
- 3 Quick Assembly** With all 1 1/8" stems
- 4 Colors / Customization** Black and silver

Weight  
0.5 lbs / 230 grams





## Airzound Horn

SKU **AH1000** / MSRP **\$39.99**

- 1 Construction**
- 2 Versatile** World's loudest bike horn - Recharges with a standard bike pump, no batteries or cartridges required
- 3 Quick Assembly** Easily installs 22-26 mm handlebars

Weight  
0.5 lbs / 227 grams



## Seat Topper

SKU **SC1000** / MSRP **\$24.99** (10.6" x 7.3")

SKU **SC2000** / MSRP **\$24.99** (9.6" x 9")

- 1 Secure** Non-slip backing holds onto any seat
- 2 Construction** Closed cell memory foam with 1½" top

Dimensions (L x W)  
10.6" x 7.3" / 27 x 18.5 cm  
9.6" x 9" / 24.5 x 23 cm

## Seats

SKU **SS1000** / MSRP **\$29.99** (10.25" x 6.7")

SKU **SS2000** / MSRP **\$29.99** (10" x 8.7")

SKU **SS3000** / MSRP **\$34.99** (10" x 10.25")

- 1 Versatile** Grab handle for easy bike transport
- 2 Visibility** Reflective printing on nose and rear for added safety
- 3 Construction** Closed cell memory foam seat. Dual dampening spring cushion shocks reduce road vibration
- 4 Quick Assembly** Easily mount on standard seatpost rail

### Weight

1.62 lbs / 736 grams

1.65 lbs / 748 grams

1.9 lbs / 860 grams

### Dimensions (L x W)

10.25" x 6.7" / 26 cm x 17 cm

10" x 8.7" / 25.5 cm x 22 cm

10" x 10.25" / 25.5 cm x 26 cm



## Bkin

SKU **BK1000** Front / Rear Single / MSRP **14.99**

SKU **BK1001** Front / Rear Combo / MSRP **24.99**

- 1 Quick Assembly** Easy mount to any round bar up to 1.5" diameter
- 2 Flexible** Wearable clip also included for mounting on bag, shirt, helmet or any other flat attachment point
- 3 Construction** Precision molded thermoplastic with stainless spring clip
- 4 Weight** 24 grams
- 5 Versatile** 4 light modes steady (½ & full) blink (½ and full). Integral USB recharge
- 6 Power** 50 lumens
- 7 Visibility** Ultra bright 300 meters day/ 1000 meters night
- 8 Viewing Angle** 120 degrees
- 9 Battery Life** 2.5 hrs run time steady full power / 20 hrs flash ½ power
- 10 Colors/Customization** Front (white light), available with grey / green / pink accents. Rear (red light) available with grey accent

### Dimensions

2.1" x .3" x .75" / 5.3 cm x 3.4 cm x 1.9 cm



# AxleRodz Security Skewers

SKU **TD9100** / MSRP **\$14.99**

- 1 Secure** Prevents theft instead of standard 9 mm quick-release skewers
- 2 Construction** Stainless springs with chromoly axle
- 3 Quick Assembly** Use 5 mm Allen Key on an quick-release hub

Weight  
0.15 lbs / 69 grams

Dimensions  
Front: 95 mm MIN - 115 mm MAX  
Rear: 132 mm MIN - 154 mm MAX



# Hublox Security Skewers

SKU **TD9130** / MSRP **\$29.99**

- 1 Secure** Prevents theft instead of standard 9 mm quick-release skewers
- 2 Construction** Stainless springs with chromoly axle
- 3 Quick Assembly** Use proprietary key on frame dropout

Weight  
0.15 lbs / 70 grams

Dimensions  
Front: 95 mm MIN - 115 mm MAX  
Rear: 128 mm MIN - 148 mm MAX



## KnoxNut Security Skewers

SKU TD9200 / MSRP \$34.99

- 1 **Secure** Three pronged key for maximum wheel security and blind-headed cap for one of a kind security
- 2 **Construction** Stainless springs with chromoly axle
- 3 **Flexible** Available with or without skewers for use on single speeds, fixed or internally geared bikes



## KnoxNut Pair with Key

SKU TD9202-M10 10 mm / MSRP \$29.99  
SKU TD9202-M9 9 mm / MSRP \$29.99  
SKU TD9202-M38 26 mm / MSRP \$29.99





## Bike Hitch Pro

SKU **BH1005N** / MSRP **\$34.99**

- 1 **Secure** Patented cam lever nearly impossible to release with any padlock
- 2 **Construction** T6 aluminum body with 9 mm skewer and pre-aligned positioning for quick fork transitions
- 3 **Quick Assembly** Easy mount on any flat surface



## Bike Hitch Pro with Lock

SKU **BH1030N** / MSRP **\$39.99**

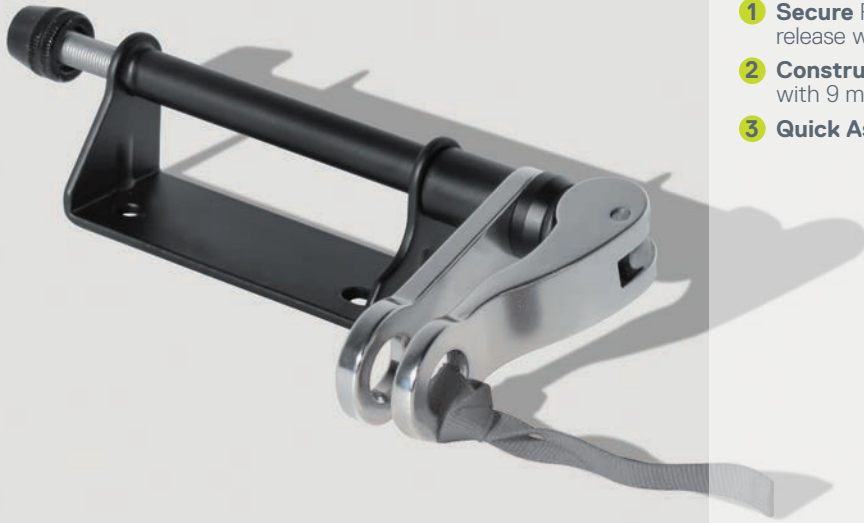
- 1 **Secure** Patented cam lever and padlock nearly impossible to release
- 2 **Construction** T6 aluminum body with 9 mm skewer and pre-aligned positioning for quick fork transitions
- 3 **Quick Assembly** Easy mount on any flat surface



## Bike Hitch Lockable

SKU **BH1002N** / MSRP **\$29.99**

- 1 **Secure** Patented cam lever nearly impossible to release with any padlock
- 2 **Construction** Steel body with anti-rust treatment with 9 mm skewer
- 3 **Quick Assembly** Easy mount on any flat surface



## Bike Hitch Original

SKU **BH1000** / MSRP **\$29.99**

- 1 **Secure** Quick-release lever
- 2 **Construction** T6 aluminum body with 9 mm skewer
- 3 **Quick Assembly** Easy mount on any flat surface



## Thru-Axle Hitch Pro

SKU **BH6002-PRO** / MSRP **\$49.99**

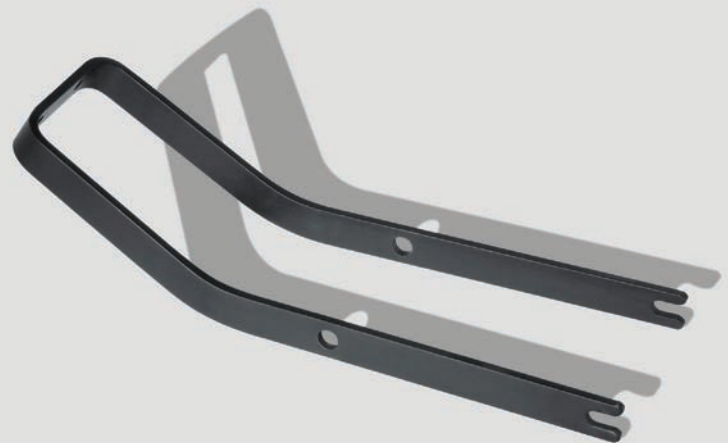
- 1 **Versatile** Accommodates all 15 mm & 12 mm thru-axles
- 2 **Fully Adjustable** Thumb screw inserts allow for instant adjustments
- 3 **Flexible** Adapter for most roof racks (Thule, Yakima, Kuat)
- 4 **Construction** Lightweight aluminum and steel
- 5 **Quick Assembly** Easy mount on any flat surface



## Wheel Hitch

SKU **BH4000** / MSRP **\$29.99**

- 1 **Secure** Aluminum rack for holding the front wheel
- 2 **Construction** Tough powder-coat finish for durability
- 3 **Quick Assembly** Easy mount on any flat surface



## Crossbar Substitute

SKU **BH2001** / MSRP **\$34.99**

- 1 **Secure** Thick rubber coating holds and protects the bike during transport
- 2 **Versatile** To use female or other unusual bike frames on "hang on" style car racks
- 3 **Fully Adjustable** Quick-release clamps instantly adjust to fit most bikes (Distance between hooks: Max 32.25" Min 23")

Max weight  
50 lb / 22.7 kg



We have reimagined some of our best-selling products with cost-effective designs, basic features, and all at affordable prices.

delta  
101 

# 101 X Mount

SKU **HL6700** / MSRP **\$9.99**

- 1 **Secure** Holds any phone or case
- 2 **Construction** Precision molded thermoplastic and silicon stretch web
- 3 **Quick Assembly** Thumb screw and shims mounts on any bar up to 1 1/8" diameter



# 101 Instant Floor Stand

SKU **RS8400** / MSRP **\$19.99**

- 1 **Fully Adjustable** Ideal for kids' bikes or adult bikes up to 1.5" tires
- 2 **Quick Assembly** Snap-fit; no tools required
- 3 **Construction** Precision molded from durable thermoplastic

Dimensions  
17" x 12" x 9" / 432 x 305 x 228 mm





## 101 Single Bike Wall Mount Rack

SKU **RS4200** / MSRP **\$9.99**

- 1 **Secure** Holds any bike up to 2.5"
- 2 **Construction** Industrial-grade powdercoated steel & custom arm covers

Max Weight  
40 lb / 18 kg

Dimensions  
10" x 3.75" x 4.25" / 25.4 x 95.25 x 108 mm



## 101 Single Bike Horizontal Wall Mount Rack

SKU **RS5701W** / MSRP **\$9.99**

- 1 **Secure** Molded rubber arms protect bike finish
- 2 **Quick Assembly** Installation in any wood stud with included hardware
- 3 **Construction** Industrial-grade powdercoated steel & custom arm covers

Max Weight  
50 lb / 22 kg

Dimensions  
3" x 14.5" x 10.5" / 80 x 368 x 266 mm



## 101 Single Bike Ceiling Hoist

SKU **RS2200W** / MSRP **\$27.49**

- 1 Secure** Smart auto-locking mechanism prevents accidental release
- 2 Quick Assembly** Includes mounting hardware & full instructions
- 3 Construction** Durable powdercoated steel with nylon tensile cord rope

Max Weight  
50 lb / 22.6 kg



## 101 2-Pack Jumbo J Hooks

SKU **RS1000W** / MSRP **\$9.99**

- 1 Secure** Oversize hook for easy use & versatile storage options
- 2 Quick Assembly** Easy integral screw-in mount
- 3 Construction** Industrial-grade powdercoated steel & custom arm covers

Max Weight  
50 lb / 22 kg

Dimensions  
8" x 4.75" x .5" / 203 x 121 x 12.7 mm





36 York Ave.  
Randolph, MA 02368 USA

**800-474-6615**

[www.designbydelta.com](http://www.designbydelta.com)